



e18 Digital to Analogue Converter

8 Channel 32bit / 384kHz

2 Channel DSD 64Fs / 2.8 MHz

Owner's Manual (Windows)

PLEASE READ BEFORE OPERATION



REV. 1.0.3a – 06/2013

Table of Contents



Table of Contents.....	2
Safety Information	4
Explanation of Graphical Symbols	4
Important Safety Instructions	4
Precautions	4
Welcome.....	7
Quick Start	8
Package Content	8
Proper Device Placement.....	8
Front Panel Controls	8
Rear Panel Connectors.....	9
Infrared Remote Control.....	9
Features.....	10
Windows ASIO Driver Advantages	10
Automatic Sampling Rate Switching	10
Automatic PCM / DSD Switching.....	10
Bit-perfect operation independent from the Windows volume control and mixer	10
Asynchronous USB mode eliminates jitter caused by the PC or the USB interface	10
Connecting and Powering the e18 DAC.....	11
Connecting the Digital Inputs	11
Connecting the Line Outputs	11
Direct Connection to Analogue Power Amplifier.....	11
Analogue Interconnect Recommendations	11
Connecting the Power Adapter.....	12
Surge Protectors	12
Isolating the Cable TV Ground	12
Remote Control Setup.....	13
Windows Drivers Setup.....	14

PC System Requirements	14
Windows ASIO Driver Installation.....	14
Configuring Audio Player with ASIO Output	16
Using the e18 DAC	17
Computer Playback Using the Asynchronous USB Input	17
Volume Control.....	18
Playing Music From SPDIF Sources	19
Specifications.....	20
Limited One Year Warranty.....	22
Appendix A: J River Media Center Quick Start Guide	24
Configure J River Media Center for Bit-perfect ASIO Playback with the e18 DAC.....	29

Copyright © 2011-2013, exaSound Audio Design. All rights reserved.

Safety Information

Explanation of Graphical Symbols

	The lightning flash with arrowhead symbol, within an equilateral triangle, is intended to alert the user to the presence of uninsulated “dangerous voltage” within the product’s enclosure that may be of sufficient magnitude to constitute a risk of electric shock to persons.
	The exclamation point within an equilateral triangle is intended to alert the user to the presence of important operating and maintenance (servicing) instructions in the literature accompanying the Device.




Important Safety Instructions



1. Read these instructions.
2. Keep these instructions.
3. Heed all warnings.
4. Follow all instructions.
5. Do not use this apparatus near water.
6. Clean only with dry cloth.
7. Do not block any ventilation openings. Install in accordance with the manufacturer’s instructions.
8. Do not install near any heat sources such as radiators, heat registers, stoves, or other apparatus (including amplifiers) that produce heat.
9. Do not defeat the safety purpose of the polarized or grounding-type plug. A polarized plug has two blades with one wider than the other. A grounding type plug has two blades and a third grounding prong. The wide blade or the third prong is provided for your safety. If the provided plug does not fit into your outlet, consult an electrician for replacement of the obsolete outlet.
10. Protect the power cord from being walked on or pinched, particularly at plug, receptacle, and the point where it exits from the apparatus.
11. Only use attachments/accessories specified by the manufacturer.
12. Refer all servicing to qualified service personnel. Servicing is required when the device has been damaged in any way, such as power-supply cord or plug is damaged, liquid has been spilled or objects have fallen into the device, the device has been exposed to rain or moisture, does not operate normally, or has been dropped.

Precautions

- Before connecting the AC power adapter cord to the device, make sure the voltage designation of the power adapter corresponds to the local electrical supply. If you are unsure of your power supply, contact your local power company. The acceptable power input range is AC ~ 100V-240V, 50/60Hz
- The device is still receiving power from the AC power source as long as it is connected to the wall outlet, even if the device itself has been turned off.

- Unplug the power adapter if you are not going to use the device for an extended period of time. Hold the power adapter when unplugging. Do not pull on the cord.
- The power adapter is used as the mechanism for cutting off power, therefore make sure it is easy to unplug.
- To ensure proper ventilation around this product, do not place this product on a sofa, bed or rug.
- High temperature will lead to abnormal operation of this device. Do not expose this device or batteries to direct sunlight or near heating objects.
- When moving the device from a cold location to a warm one, or vice versa, moisture may condense on components inside the device. Should this occur, the device may not operate properly. In such a case please turn the device on for 1-2 hours to facilitate moisture evaporation.

	<p>WARNING: TO REDUCE THE RISK OF FIRE OR ELECTRIC SHOCK, DO NOT EXPOSE THIS DEVICE TO RAIN OR MOISTURE. DANGEROUS HIGH VOLTAGES MAY BE PRESENT INSIDE THE ENCLOSURE. DO NOT OPEN THE CABINET. REFER SERVICING TO QUALIFIED PERSONNEL ONLY. THE DEVICE SHALL NOT BE EXPOSED TO DRIPPING OR SPLASHING AND THAT NO OBJECTS FILLED WITH LIQUIDS, SUCH AS VASES SHALL BE PLACED ON THE APPARATUS.</p>
	<p>WARNING: CHANGES OR MODIFICATIONS NOT AUTHORIZED BY THE MANUFACTURER CAN INVALIDATE THE COMPLIANCE TO REGULATIONS AND CAUSE THE UNIT TO BE NO MORE SUITABLE TO USE. THE MANUFACTURER REFUSES EVERY RESPONSIBILITY REGARDING DAMAGES TO PEOPLE OR THINGS DUE TO THE USE OF A UNIT WHICH HAS BEEN SUBJECT TO UNAUTHORIZED MODIFICATIONS OR TO MISUSE OR TO MALFUNCTION OF A UNIT WHICH HAS BEEN SUBJECT TO UNAUTHORIZED MODIFICATIONS.</p>
<p>FCC Statement</p>	<p>This equipment has been tested and found to comply with the limits for a Class B digital device, pursuant to Part 15 of the FCC Rules. These limits are designed to provide reasonable protection against harmful interference in a residential installation. This equipment generates, uses, and can radiate radio frequency energy and, if not installed and used in accordance with the instructions, may cause harmful interference to radio communications. However, there is no guarantee that interference will not occur in a particular installation. If this equipment does cause harmful interference to radio or television reception, which can be determined by turning the equipment off and on, the user is encouraged to try to correct the interference by one or more of the following measures:</p> <ul style="list-style-type: none"> • Reorient or relocate the receiving antenna. • Increase the separation between the equipment and receiver. • Consult the dealer or an experienced radio/TV technician for help. <p>Any unauthorized changes or modifications to this equipment would void the user's authority to operate this device. This device complies with Part 15 of the FCC Rules. Operation is subject to the following two conditions: (1) This device may not cause harmful interference, and (2) this device must accept any interference received, including interference that may cause undesired operation.</p>
	<p>This unit is compliant with the following CE regulations when an USB cable less than 3m is used: CEI EN 55022:2009 Class B (Radiated Emissions), CEI EN 55024:1999, CEI EN 55024:A2/2003, CEI EN 55024:IS1/2008 (Radio Frequency Electromagnetic Fields, 50Hz Magnetic Field Immunity Test and Electrostatic Discharges – ESD).</p>

	<p>This product, when no longer usable, when disposed off can't be treated as generic garbage, but must be disposed of at a collection point for recycling of electrical and electronic equipment, in compliance with the WEEE regulation (Waste of Electrical and Electronic Equipment).</p> <p>By making sure that this unit is correctly recycled, you will help preventing potential damages to environment and human health, which could be caused by the incorrect treatment of this product as generic garbage. Materials recycling helps conserve natural resources.</p>
	<p>We use our best efforts to ensure that information in this document is complete, accurate and current, but otherwise we make no representation concerning the same. We reserve the right to change or modify the information any time, without prior advice. It's up to the customer to ensure that the manual being consulted is the latest version.</p>
<p>Trade marks</p>	<ul style="list-style-type: none"> ▪ Direct Stream Digital (DSD) is a trademark of Sony Corporation. ▪ Designed for Windows Media, Microsoft, HDCD, and the HDCD logo are trademarks or registered trademarks of Microsoft Corporation in the United States and/or other countries. ▪ Apple, Mac and OS X are trademarks of Apple, Inc. ▪ All other trademarks are the properties of their respective owners.

Welcome

Thank you for purchasing the exaSound e18 DAC!

The e18 DAC brings the highest quality of music reproduction to computer audiophiles. It delivers stereo or 8 channels at sampling rates up to 384 kHz/32bit with unprecedented bit-perfect low-jitter precision. e18 Mk II adds support for SACD quality stereo DSD (64 Fs / 2.8Mhz).

e18 exceeds the expectations of the demanding stereophile, while delivering a multichannel sound stage perfected for musical experience.

We hope that the e18 DAC will help you to enjoy world-class music experience for years to come. Please take a few minutes to read right through this manual. Investing a little time now is the best way to ensure that you make the most of your investment.

Your satisfaction is our highest priority.

Happy listening,

exaSound Audio Design

www.exaSound.com

CustomerService@exaSound.com

Quick Start

Package Content

The following items should be in the box:

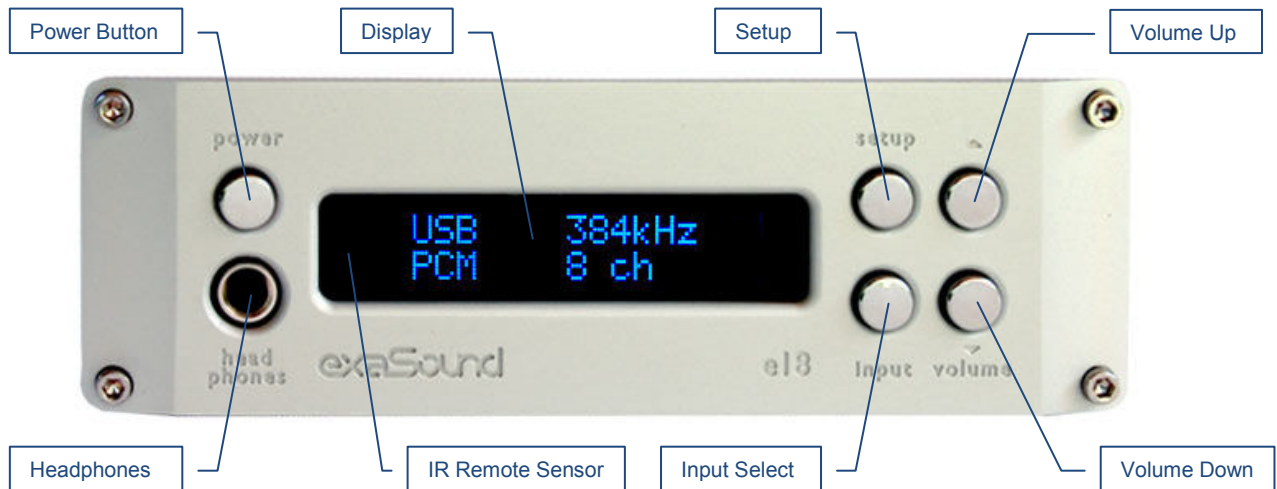
- e18 DAC
- Power supply
- Mini A-B USB cable
- IR Remote Control

Proper Device Placement

Place the device on a stable solid base, far from heat sources. Do not expose the device to direct sunlight. Allow at least 2.5 cm (1") around the device for ventilation. Do not place the device on fabrics, inside enclosed space, or in contact with curtains. Do not place the device on top of power amplifiers or any other equipment that emits heat. Do not expose the unit to smoke, humidity, moisture and water.

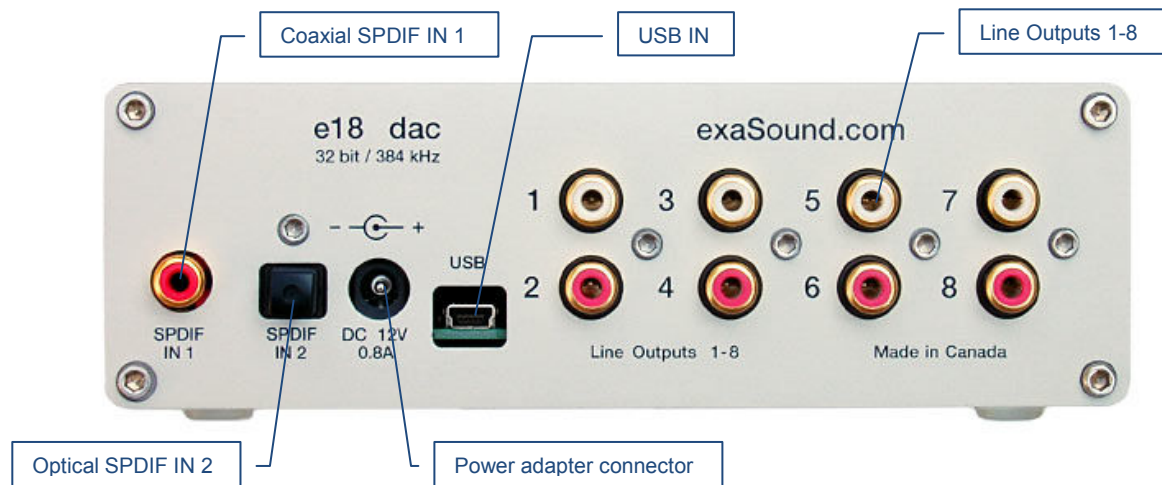
Keep the lengths of analogue interconnects and speaker cables short for optimal sonic performance. Remember that cables act as filters. Shorter cables have less impact on sonic performance. The shorter the cables, the more transparent they become.

Front Panel Controls



Headphones accepts standard 1/4-inch stereo single-ended phone plug . Use a suitable adapter for headphones equipped with a smaller plug.

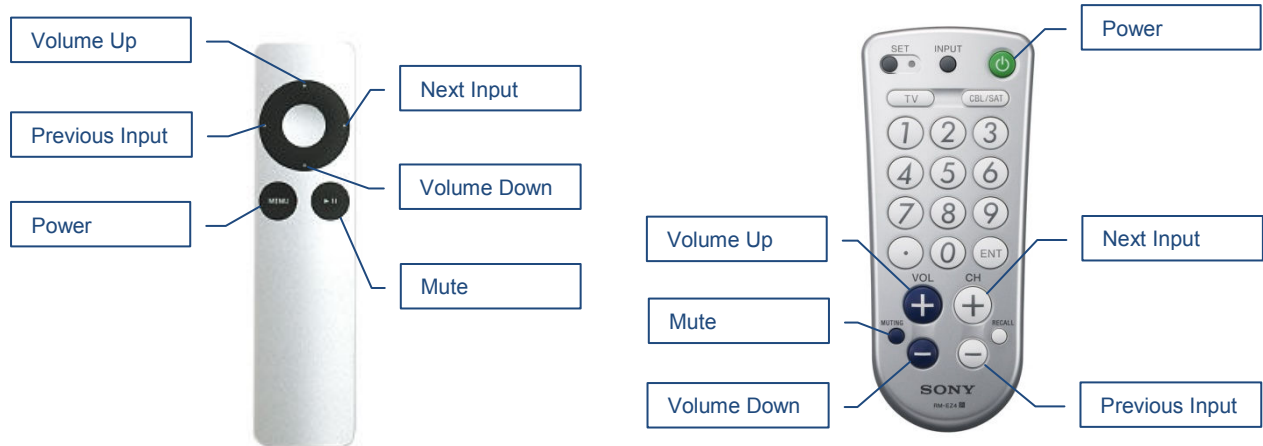
Rear Panel Connectors



SPDIF IN1 - Coaxial SPDIF Input
SPDIF IN2 - Optical TOSLINK SPDIF Input
DC 12V / 0.8A - Power adapter connector
USB - Mini USB connector

Line Outputs 1-8 - Analogue outputs
 Channel 1 to Channel 8

Infrared Remote Control



Your unit is pre-programmed to work with the supplied remote control.

The e18 DAC can be re-programmed to work with most infrared remote controls using Sony and NEC IR protocols, for example the Sony RM-EZ4 Universal Remote, or the Apple Remote Control.

See the **Remote Control Setup** section for instructions how to change button assignments and how to pair a different remote control with your e18 DAC.

Features

The e18 DAC is based on the ES9018 *Sabre*³² reference DAC chip. It delivers 32-bit precision capable of resolving the smallest signal details. ES9018 features patented 32-bit Hyperstream™ architecture and Time Domain Jitter Eliminator. It delivers the industry's highest performance levels that will satisfy the most demanding audio enthusiasts.

Windows ASIO Driver Advantages

Using ASIO brings unique advantages that are hard to achieve and reliably verify with other Windows driver technologies:

Automatic Sampling Rate Switching

PCM data is always streamed without re-sampling. Native Windows 7 drivers often require manual sampling rate selection and may apply implicit re-sampling when the source rate differs from the rate set in the Windows Control Panel.

Automatic PCM / DSD Switching

Audio data is always streamed in its native format. e28 switches automatically between PCM and DSD modes. DSD streams are processed in their native format without conversion to PCM.

Bit-perfect operation independent from the Windows volume control and mixer

The Windows volume control and mixer are optimized to provide wide compatibility and easiness of use. These features come at the expense of sound quality. The resulting output is not bit-perfect or bit-transparent. Third party proprietary Windows drivers are hard to be verified as bit-perfect because factors beyond the control of the user can change the Windows sound processing chain.

Our proprietary ASIO implementation is completely independent from the Windows sound system and always operates in Exclusive Mode. Only one player can take control of the ASIO driver. When playback starts the player sets the driver sampling rate to be the same as the native rate of the current media file. The sound data stream is delivered to the e18 FIFO memory buffer without any processing or manipulation.

Asynchronous USB mode eliminates jitter caused by the PC or the USB interface

Asynchronous USB is a two-way communication method between a computer and an external USB device. In this method, the USB device is running as a master, and the computer is acting as a slave that delivers data only when requested by the master.

In the case of the e18 DAC, sound data is requested by the FPGA core and stored in the device FIFO memory buffer. The FPGA core makes sure that the buffer never gets empty during playback. Data from the buffer is streamed to the DAC chip. The precision of the timing of the output stream is determined only by the DAC oscillators and it is not degraded in any way by the PC clocks or by delays caused by the USB interface.

Connecting and Powering the e18 DAC



Before connecting, turn off the power to all the components in your system.

Connecting the Digital Inputs

All digital inputs are galvanically isolated to eliminate ground loop noise. The e18 DAC accepts three digital inputs

- **USB** - This is the recommended and most capable input. It supports stereo DSD and up to 8 channels and 32 bit resolution at sampling frequencies from 44.1 kHz to 384 kHz. Connect the e18 DAC to your computer using the supplied Mini A-B USB cable. Most standard Mini A-B USB cables with length up to 6 ft (2m) can be used.
- **SPDIF IN1** - SPDIF Input, 75-ohm RCA. Supports 2 channels PCM up to 24 bit resolution at standard sampling frequencies from 44.1 kHz to 192 kHz.
- **SPDIF IN2** - SPDIF Input, TOSLINK, Optical. Supports 2 channels PCM up to 24 bit resolution at standard sampling frequencies from 44.1 kHz to 96 kHz.

Connecting the Line Outputs

Line Outputs 1-8 - Connect the left, right and surround channels to an analogue power amplifier using pairs of RCA interconnects.

Direct Connection to Analogue Power Amplifier

If your music sources are digital, you don't need a preamplifier. The built-in volume control allows analogue power amplifiers to be connected directly to the e18 DAC. Amplification always brings some level of noise and distortion. Eliminating unnecessary amplification helps to achieve higher level of transparency.



Avoid connecting the e18 DAC to receivers and any other sound processing equipment that performs analogue to digital (ADC) conversion. Digitizing the analogue output signals back to the digital domain for processing will undo the benefits that e18 brings to you. Remember that your sound system is as good as the weakest link in the sound processing chain.

Analogue Interconnect Recommendations


Over-engineered interconnects made from exotic materials are unnecessary. When selecting cables, the following characteristics are important:

- Reliable electrical contact
- Low resistance
- Robust mechanical design

Remember that cables act as filters. The shorter the cable, the more transparent your system will be.

Connecting the Power Adapter

To minimize ground noise and hum, it is recommended to connect the power cords of all components to a single point - usually a single surge protector with multiple outlets. Connecting all components to a single point, as close as it is practically possible minimizes the differences in ground potentials between the components.


	<p>Using an Upgraded Power Supply</p> <p>The e18 DAC comes with a 12V/1200mA power adapter. This power adapter has been tested to comply with the DAC's power supply and quality requirements and allows for very high performance. A better unit may allow you to squeeze the last bit of performance from the e18 DAC. Please be advised that using a different power supply than the one included in the package may void the warranty.</p> <p>If you decide to use another power supply, the specifications marked on the back of the e18 DAC must be observed.</p>
---	--

Surge Protectors

We strongly recommend the use of surge protector for all your audio and video components.

Isolating the Cable TV Ground

If you have a cable TV connected to your audio system, ensure that the TV cable ground is galvanically isolated from the audio system ground. The TV cable ground, usually connected to the earth outside your home, can have a significantly different potential than the audio ground. This condition can cause audible hum. If you suspect this is the case, use a cable TV ground isolator just before the cable set-top box or at the RF TV input.

	<p>When turning on and off your music system, the power amplifier should be the last component to be turned on and the first component to be turned off. This prevents power on/off transients from being transmitted to loudspeakers.</p>
---	--

Remote Control Setup

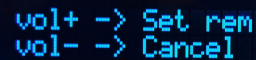
The e18 DAC is pre-programmed to work with the supplied remote control. If you like, you can reprogram the e18 DAC to work with a different IR remote control. The exaSound e18 DAC can be trained to recognise commands from most infrared remote controls using Sony and NEC IR protocols.

Use the following procedure to change remote control button assignments or to pair the e18 DAC with a different remote control:

1. Power on the e18 DAC. Make sure that the unit is not in playback mode.
2. Press the **Setup** button.
3. Press the **Volume Up** button to confirm the remote control programming mode, or press the **Volume Down** button to cancel the operation.
4. Point the remote control to the e18 DAC display. Press and hold down the remote control buttons for about one second during each step below to assign functions to them.
5. Press the remote control button you want to use for increasing the volume.
6. Press the remote control button you want to use for decreasing the volume.
7. Press the remote control button you want to use for selecting the next input.
8. Press the remote control button you want to use for previous input.
9. Press the remote control button you want to use for turning the unit on and off.
10. Press the remote control button you want to use for mute.
11. Wait until the remote control configuration is saved. Your e18 DAC is now paired for with the new IR remote control.



exaSound e18
-14.0dB



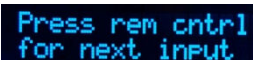
vol+ -> Set rem
vol- -> Cancel




Press rem cntrl
for Vol +



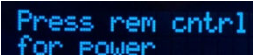
Press rem cntrl
for Vol -



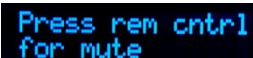
Press rem cntrl
for next input



Press rem cntrl
for prev input



Press rem cntrl
for Power



Press rem cntrl
for mute



Saving

Windows Drivers Setup

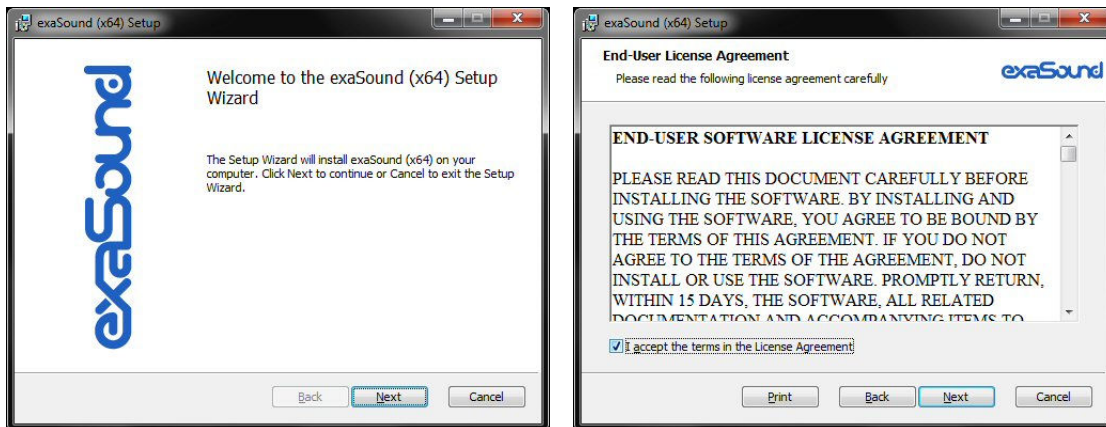
PC System Requirements

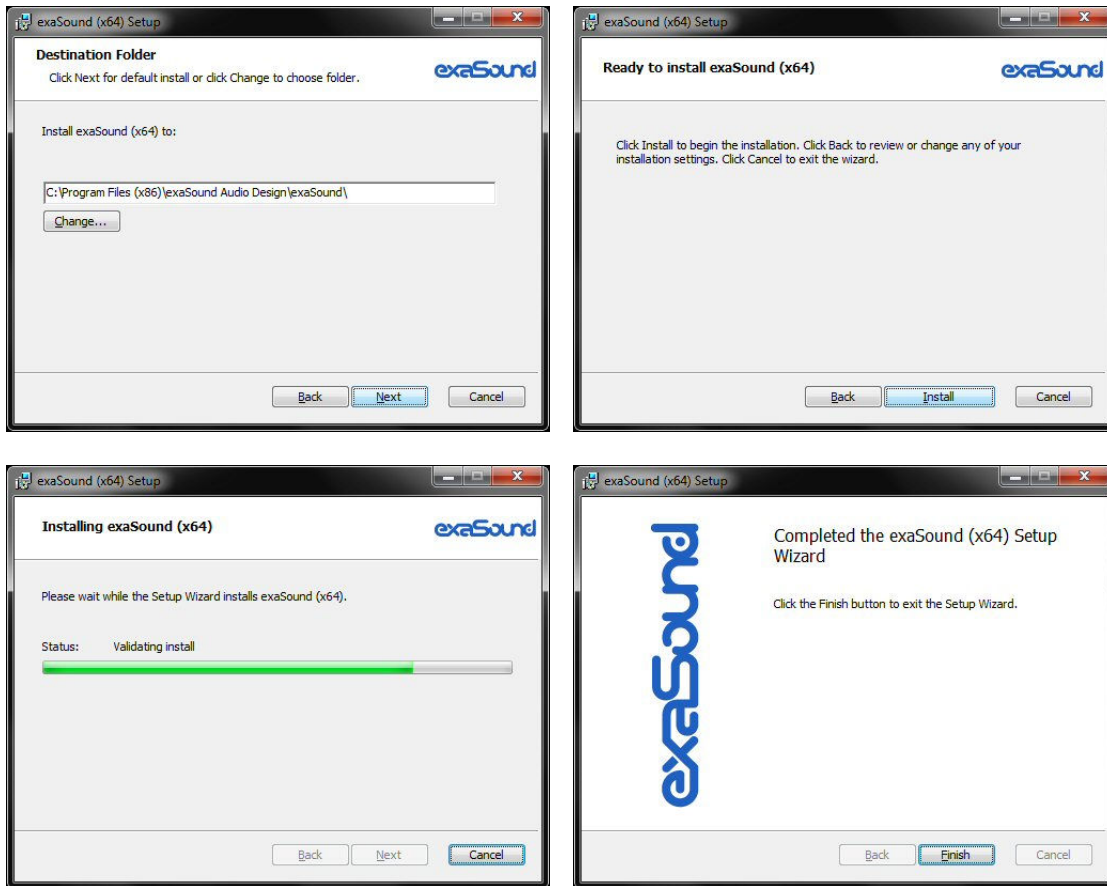
- Operating systems:
 - Windows 8 x86 or Windows 8 x64
 - Windows 7, 32 or 64 bit
 - Windows XP / 32 bit with the latest service packs installed
- USB 2.0 / USB 3.0 interface
- 2 GB of RAM
- 10 GB disk space mainly for music files

Windows ASIO Driver Installation

The first step required in the Windows setup process is to install the exaSound ASIO driver:

1. Don't connect the e18 DAC to the PC until the driver is installed. Don't worry if you've connected the device already. Just disconnect it.
2. Download the latest driver.
You should have received an email from us with username and password. Please login to our support website at <http://support.exasound.com/Downloads.aspx> and download the latest version of the exaSound G3 Windows ASIO Driver. Don't use setup packages downloaded from other websites.
3. Unzip the installation package and double-click on Install.exe to start the installation. Follow the instructions. In most cases you just need to accept the defaults on the following screens.

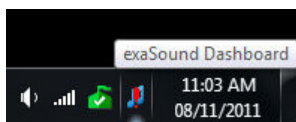




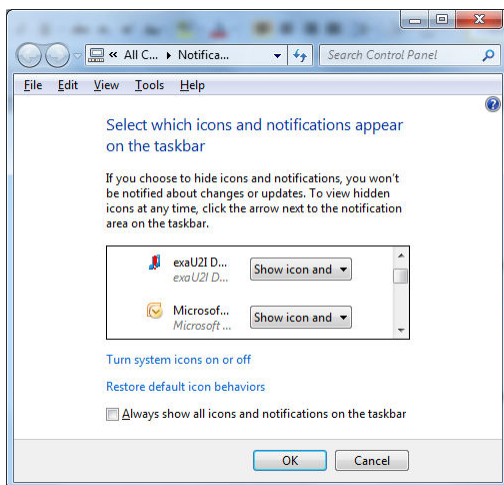
4. Connect the e18 DAC. You should see a pop-up message on the computer screen indicating that e18 DAC is successfully installed.







5. Upon completion of the Windows ASIO driver installation you will see the exaSound Dashboard Icon in the System Tray area next to the clock.



6. If you don't see it, right-click on the clock and **select *Customize Notification Icons*** from the menu.



7. Scroll down to the exaSound Dashboard icon and from the dropdown select ***Show icon and notifications***. Click **OK**.
8. You should be able to see the exaSound Dashboard icons at all times. The Icon changes to indicate playback and displays an exclamation mark when the USB cable is disconnected:

-  exaSound Dashboard
-  Stop Icon
-  Play Icon
-  USB Cable Disconnected Icon

9. Close all programs and reboot Windows. Some ASIO players may not recognise the driver if you omit this step. If you don't restart Windows you may get an error message: "Hardware not present".

Configuring Audio Player with ASIO Output

You can use most ASIO-enabled software with the e18 DAC. In our experience [FooBar2000](#) and [J River Media Center](#) provided the best performance and sound quality.

Appendix A provides for step by step instructions for installing and configuring J River Media Center for ASIO playback with the e18 DAC.

FooBar configuration instructions are available on the [exaSound](#) blog.

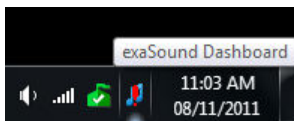
Using the e18 DAC

Computer Playback Using the Asynchronous USB Input

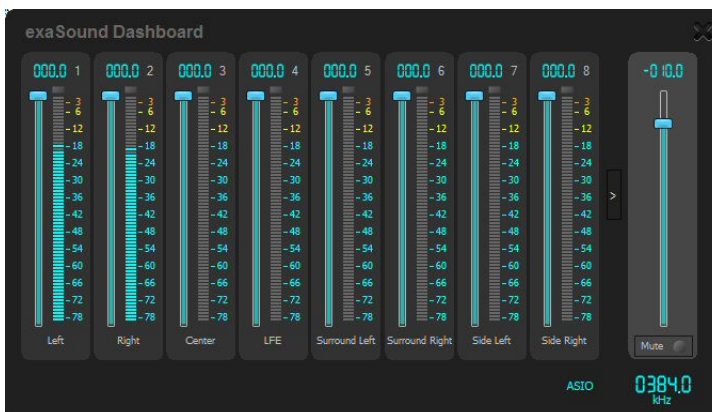


Before turning your amplifiers ON, always check the e18 DAC front panel to make sure that the volume level is below -25dB.

- The e18 DAC can be controlled from the front panel buttons, using an IR remote control or from the computer screen.
- Make sure that all cables are connected. Turn on the unit using the **Power** button on the front panel of the remote control. The front panel display will light up. After power on the **USB Input** is selected by default.
- Click on the exaSound Dashboard Icon in the System Tray area next to the clock.



- You will see the exaSound Dashboard window.



Channel View



Minimised View

- During playback the current sampling rate is displayed under the master volume slider.
- You can customize the channel labels: Select a label with the mouse and edit the channel title. Press **Enter** to save or **Cancel** to undo the change.
- Use the arrow button between Channel 8 and the master volume to toggle between **Channel View** and **Minimised View**.
- Use the **X** button in the top right corner to minimize the exaSound Dashboard window.

Volume Control

The e18 volume is controlled by the ES9018 DAC chip. It is completely independent from the Windows software volume control and it preserves the maximum possible signal to noise ratio.

The volume level changes in steps of 0.5 dB. At first power on, the volume level is set to -40dB. When the dashboard is closed it remembers the volume level settings.

Use the sliders on the exaSound Dashboard window to control the volume for individual channels and the master volume. The sliders can be controlled in several ways:

- By right-clicking and dragging a slider
- By positioning the mouse cursor over a channel and turning the mouse wheel. When the mouse cursor is rested over the channel area the background color changes to indicate that the channel is active
- By selecting a channel with the mouse and using the **Up** and **Down** arrow keys on the keyboard

The master volume can also be controlled from the device front panel or using a remote control. When the master volume level is changed, the value displayed on the exaSound Dashboard and on the device front panel display are synchronised.

Volume levels for individual channels can be controlled only from the exaSound Dashboard.

The sound can be muted by clicking the **Mute** button under the master volume slider or by using the remote control. Pressing or clicking **Mute** again restores the previous volume level. Pressing **Volume Up** or **Volume Down** will cancel the mute state.

Make sure that your player application is configured to use the e18 DAC in ASIO mode (See Appendix A and Appendix B for step by step instructions). Start playback. You will see the level indicators moving and the current sampling rate displayed on the exaSound Dashboard. The e18 DAC front panel display will indicate the number of channels, the sampling rate and the master volume level.

Note: level indicators are inactive in DSD mode.

Playing Music From SPDIF Sources

The e18 DAC offers greatly improved level of sonic clarity and fidelity from SPDIF sources. The sonic improvement is the result of the outstanding jitter cancelling capability, superb signal to noise ratio, and low distortion levels of the e18 DAC.

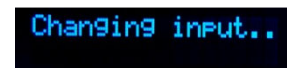
You can connect up to two SPDIF devices like disk players and wireless music servers.

To use SPDIF sources

1. Select SPDIF input by pressing the **Input** button on the device front panel or by using the **Previous Input / Next Input** buttons on the remote control.
2. The e18 front panel display will flash a **Changing Input** message.
3. The e18 front panel will display information about the input in use, the current sampling rate and the master volume level



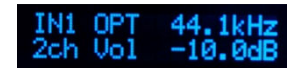
exaSound e18
-14.0dB



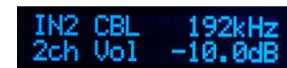
Changing input..



IN2 CBL ---
-14.0dB



IN1 OPT 44.1kHz
2ch Vol -10.0dB



IN2 CBL 192kHz
2ch Vol -10.0dB

Specifications

D/A Converter IC:	ESS Technology ES9018S <i>Sabre32</i> Reference DAC	
PCM Sampling Rates - Asynchronous USB ASIO:	44.1kHz, 48 kHz, 88.2 kHz, 96 kHz, 176.4 kHz, 192 kHz, 352.8 kHz, 384 kHz	
DSD Sampling Rate - Asynchronous USB ASIO:	e18	e18 Mk II
	n/a	DSD 64 Fs / 2.82 MHz (SACD quality)
Sampling Rates - SPDIF Coaxial IN 1:	44.1kHz, 48 kHz, 88.2 kHz, 96 kHz, 176.4 kHz, 192 kHz	
Sampling Rates - SDIF Optical IN 2:	44.1kHz, 48 kHz, 88.2 kHz, 96 kHz	
Total Harmonic Distortion + Noise:	0.0009% @ 1KHz, 0dBFS	
Intermodulation Distortion:	0.0005% @ 19KHz + 20KHz 0 dBFS 2nd order IMD	
Signal-to-Noise Ratio:	123 dB, A-weighted, 2 Vrms	
DAC Master Clock Jitter:	0.13psec rms	
Frequency Response:	0 Hz - 20 KHz (-0.15dB)	
Phase:	Non-inverting	
Channel Separation:	110 dB @ 1KHz for adjacent channels 130 dB @ 1KHz between channel groups	
Digital Inputs:	USB 2.0, SPDIF Coaxial, SPDIF TOSLINK (optical)	
Number of channels:	USB: 2 to 8 channels SPDIF - 2 channels PCM	
Operating System Requirement:	Mac OS X, OS X Lion, OS X Mountain Lion Windows 8 x64, Windows 7, Windows XP or Windows Vista (ASIO Compatible Player is required for all Windows platforms)	
Digital Volume Control Steps:	0.5 dB	

Volume Matching between Channels:	Better than 0.1 dB
Line Output:	RCA jacks with gold-plated contacts
Line Output Level:	2 Vrms (unbalanced)
Line Output Impedance:	200 ohms
Line Output Offset:	< 5 mV
Headphone Amp Current Output:	700 mA peak
Headphone Amp Output Impedance:	0.25 ohm, 20Hz-20KHz
Headphone Amp THD+N:	0.004%, 2Vrms into 60ohms
Headphone Jack:	1/4" TRS SE
Power Jack Diameter:	Internal: 2.1mm External : 5.5mm
Power Consumption:	<8 W
Dimensions (W x H x D):	6.5 x 2.2 x 7.9 inches (165 x 55 x 175 mm)
Weight:	1.9 lbs (0.86Kg)

Limited One Year Warranty

exaSound Devices are warranted against defective workmanship or materials for one (1) calendar year from the original date of purchase. This warranty applies only to exaSound brand products manufactured by exaSound and sold to the original consumer by either exaSound or an exaSound authorized reseller. This warranty does not apply to exaSound brand products imported and sold by unauthorized dealers, distributors, or other sellers. exaSound may at its sole discretion, refuse to honour the warranty of any such unauthorized product that may be presented for service.

Warranty service can only be performed by exaSound. Devices which are defective must be shipped pre-paid and insured to exaSound for warranty service in accordance with our Return Policy published at <http://exasound.com/eStore/TermsOfUse.aspx>. For products that we verify to be eligible for warranty service, we will pay the shipping cost to return the Device to you via ground shipment.

If in our assessment the defect is covered by our Warranty, the defective item will, at our sole option, be repaired, replaced with the same item or its functional equivalent, or the purchase price will be refunded. ExaSound in its sole and absolute discretion shall be the sole determiner of whether a product is in fact defective.

Replacement parts and products assume the remaining original warranty, or ninety (90) days, whichever is longer.

This limited warranty covers non-commercial use of this product, and shall not apply to the following, including, but not limited to: applications and uses for which this product was not intended; altered product or serial numbers; cosmetic damage or exterior finish; batteries and cable accessories; accidents, abuse, neglect, fire, water, lightning or other acts of nature; incorrect electrical line voltage, fluctuations and surges; failure to follow operating or maintenance instructions. ExaSound does not warrant uninterrupted or error-free operation of the product. This limited warranty shall not extend to anyone other than the original purchaser of the product. It is non-transferable and states your exclusive remedy.

ExaSound hereby expressly disclaims all liability for product defect or failure, that are due to normal wear, product misuse, physical tampering, abuse, product modification, improper product selection, non-compliance with any codes, misappropriation or the failure of the Device while being used for purposes for which it was not intended.

THE FOREGOING WARRANTY IS THE ONLY WARRANTY WITH RESPECT TO THE DEVICES AND WE MAKE NO OTHER WARRANTY WHATSOEVER, EXPRESS OR IMPLIED, REGARDING THE DEVICES INCLUDING MERCHANTABILITY AND FITNESS FOR A PARTICULAR PURPOSE. IN NO EVENT WILL EXASOUND, OR ITS AUTHORIZED RESELLERS BE LIABLE FOR INCIDENTAL, CONSEQUENTIAL OR SPECIAL DAMAGES, EVEN IF SUCH DAMAGES RESULT FROM NEGLIGENCE OR OTHER FAULT.

TO REGISTER YOUR PURCHASE FOR WARRANTY, please visit the following Web site:
<http://www.exaSound.com/registration.aspx>

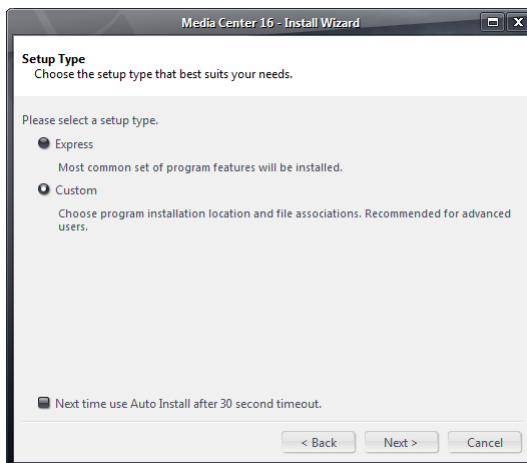
TO OBTAIN WARRANTY SERVICE, please follow these instructions:

- Contact exaSound customer service via email at CustomerService@exaSound.com with details of the defect claimed, product model, serial number, date and place of the original purchase.
- If it is determined that your product needs service, a Return Merchandise Authorization (RMA) number will be issued to you along with return instructions and address of an exaSound service center.
- Pack the product securely in the original packaging, with your assigned RMA number marked clearly on the outside of the package. Send the package pre-paid and insured to the exaSound to obtain warranty service.
- All returns must comply with our Return Policy displayed at <http://exaSound.com/Terms.aspx>.

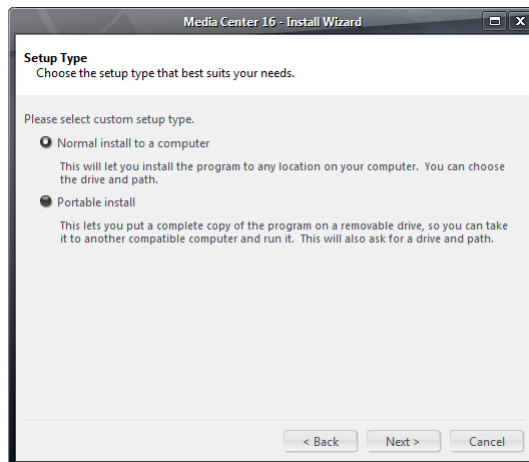
Appendix A: J River Media Center Quick Start Guide

J River Media Center is a "jukebox"- style media player that allows users to play and organize various types of media. It offers a world-class engine for audiophile playback. All data paths within the program are 64 bit. J River Media Center supports most lossless formats including APE, FLAC, Windows Media Lossless, and Apple Lossless. Follow these steps to install and configure J River Media Center for use with the e18 DAC.

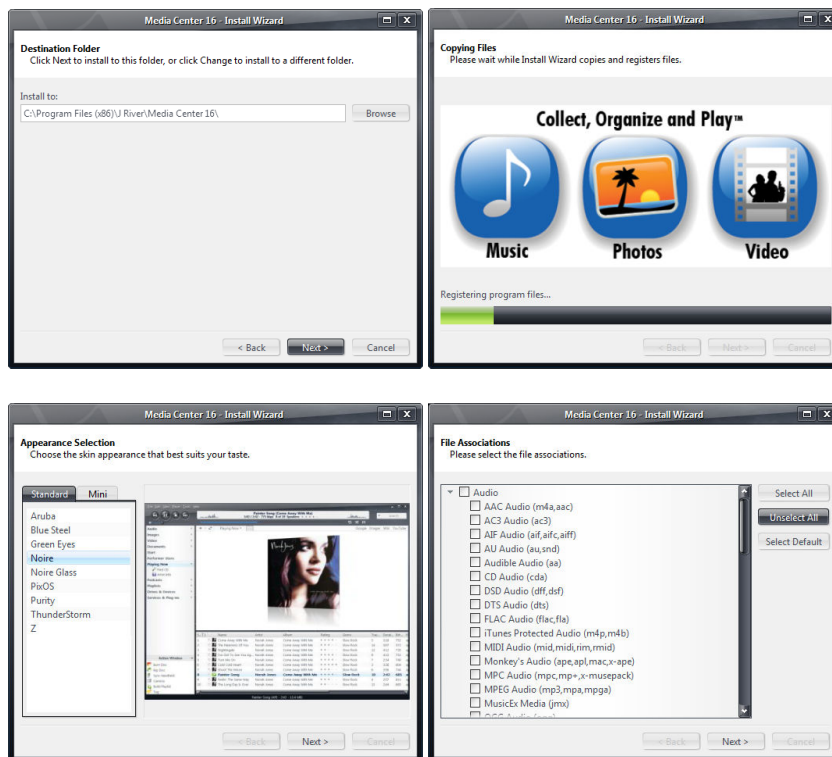
1. Download J River Media Center from the official company's website
<http://www.jriver.com/download.html>
2. Double click MediaCenterxxxxx.exe. Confirm installation on the security screens displayed by Windows.
3. J River Media Center offers a **Express** installation option. We recommend using the Select **Custom** Installation procedure.

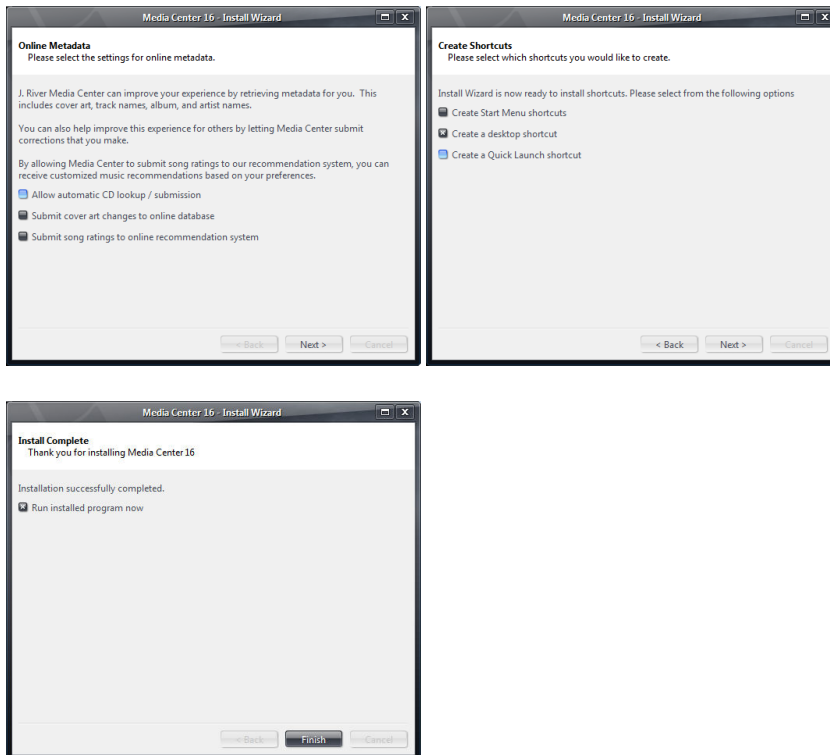


On the following screen select **Normal install**. **Portable install** is possible only if you have purchased a licence.



4. Accept the default installation location. You can use the defaults or customise the settings on the following screens:

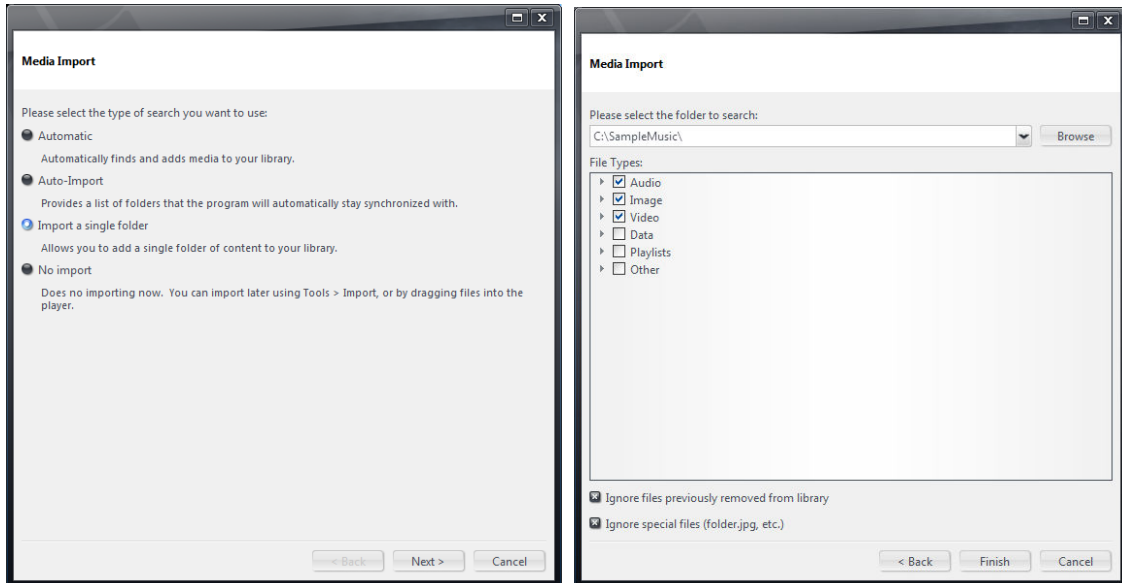




5. When the installation is finalized you will see the J River Media Center Main window. At this point you have 30 seconds to cancel the automatic scanning of your computer for media files. Click on the link in the lower left corner of the application window if you prefer to select the location of your media files manually.



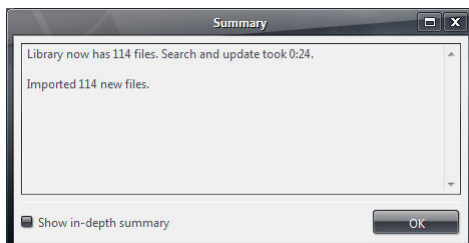
6. The following screens present options for configuring your media library.



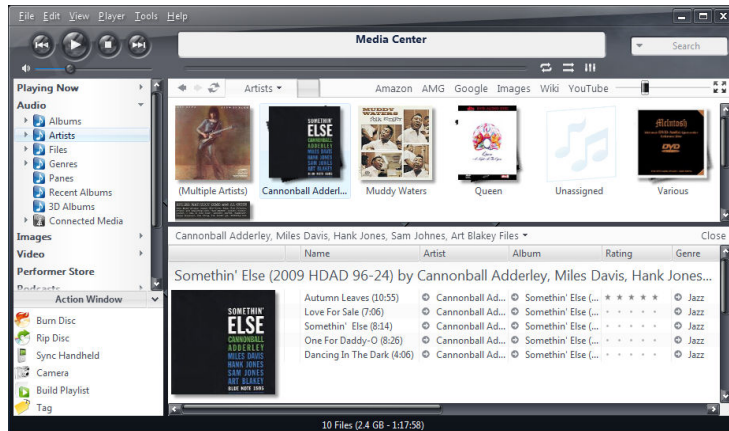
7. Complete the steps in the Media Import Wizard. You will be taken back to the main application window.



8. The media import will continue in the background. You will be notified when all media files are processed.



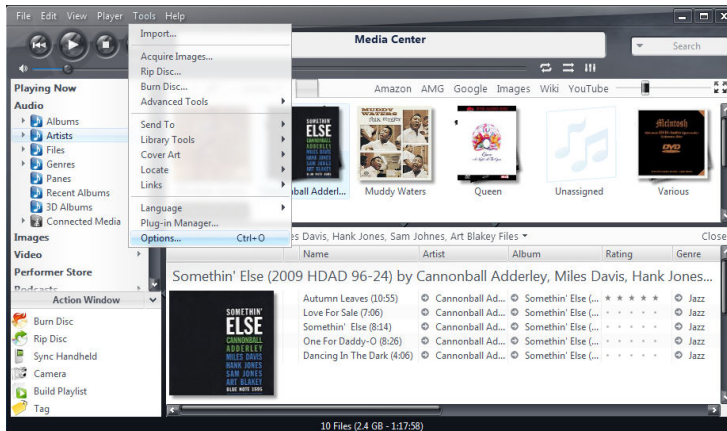
9. At this point you should be able to test J River Media Center with your default Windows sound driver and the PC speakers. In the navigation tree select Audio -> Artist. Select an album and double-click a track. You should hear music. This confirms that the basic J River Media Centre installation is working.



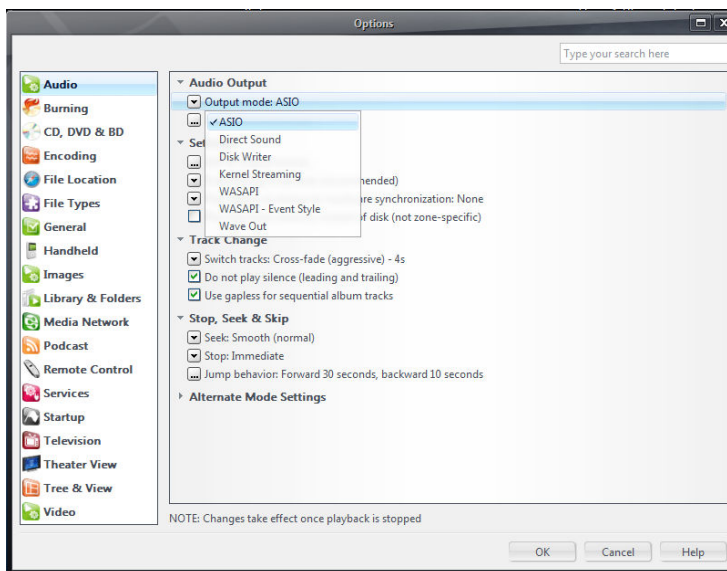
Configure J River Media Center for Bit-perfect ASIO Playback with the e18 DAC

Before you continue make sure that J River Media Center is installed and you can play music using the default Windows sound card and the PC speakers. For instructions see the previous section.

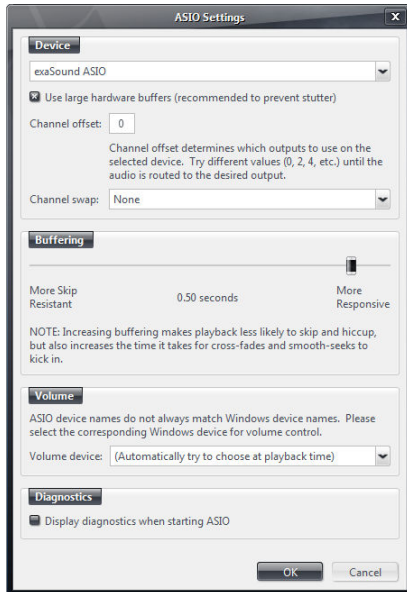
1. Start J River Media Center. Select Tools -> Options from the application menu.



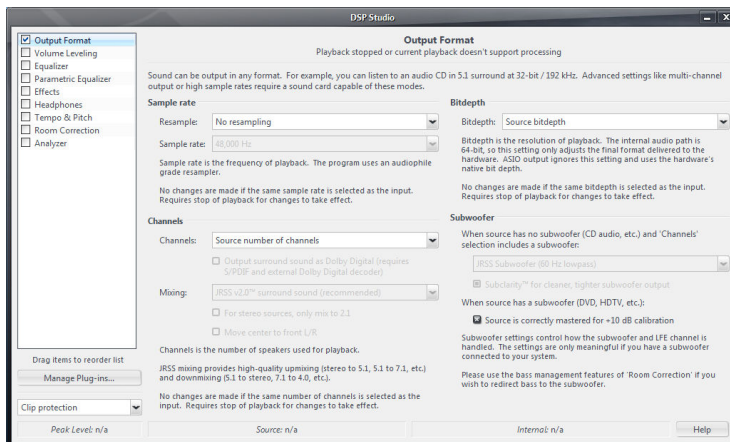
2. From the left pane of the **Options** window select **Audio**. Open the **Output Mode** dropdown in the right pane and select **ASIO**.



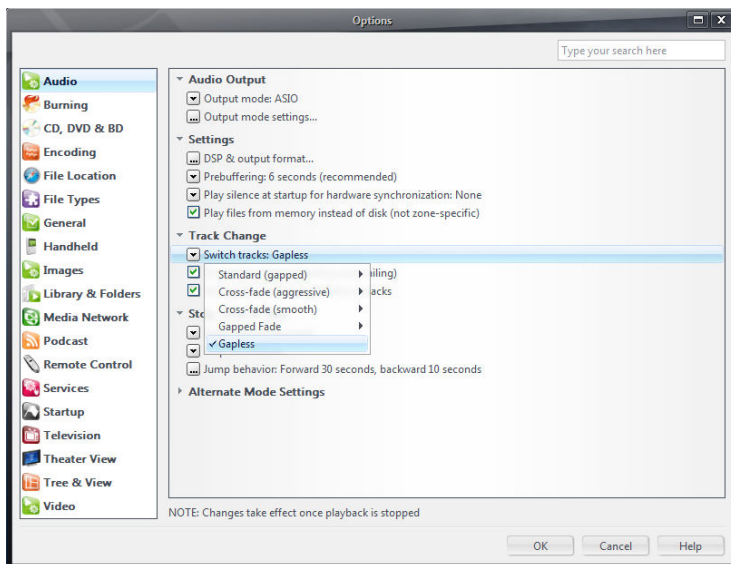
- From the right pane of the Options window select **Output Mode Settings**. On the **ASSIO Settings** Screen select **exaSound ASIO** and click **OK**.



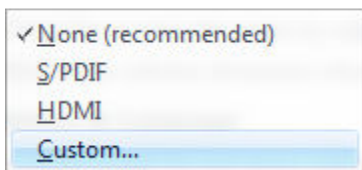
- From the right pane of the **Options** window select **DSP & Output Format**. Check the **Output Format** checkbox. In most cases you can accept the default settings. Make adjustments as necessary to setup the software for your speakers configuration.



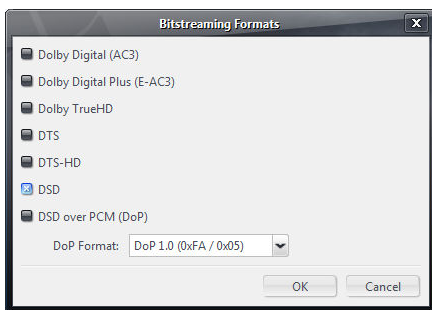
5. From the right pane of the **Options** window select **Track Change** -> **Switch Tracks: Gapless**. Click **OK** to close the **Options** window.



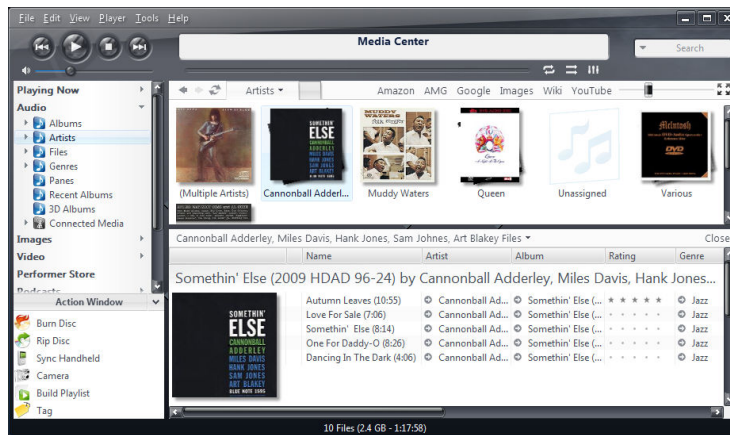
6. In the navigation tree select **Audio** -> **Bitstreaming**. From the dropdown select **Custom**. Please note that older versions of J River Media Center display this setting on the **Video** tab under the **Streaming** dropdown menu.



7. Select **DSD**.



8. In the navigation tree select Audio -> Artist. Select an album and double-click a track. You should be able to play music with the e18 DAC.



9. You can enable **Theatre View** from the **View** menu.

